

Ordering Securitron Mag Locks

Securitron makes a wide variety of Mag Locks, each with its own set of product options. This guide will sort out the options available when ordering.

Step 1: Holding Force

Interior Doors: 600 lbs. is an average holding force for doors that are not expected to be attacked by intruders. These are also called "traffic control" locks to distinguish them from higher security locks.

Exterior Doors: 1200 lbs. or more is used on exterior doors to provide the first line of defense against intruders.

MODEL	DESCRIPTION
M32	600 lbs., traffic control
M38	New and improved version of M32
M62	1200 lbs., security doors
M68	New and improved version of M62
M82	1800 lbs., high security doors

Selecting a model determines the holding force of the lock.

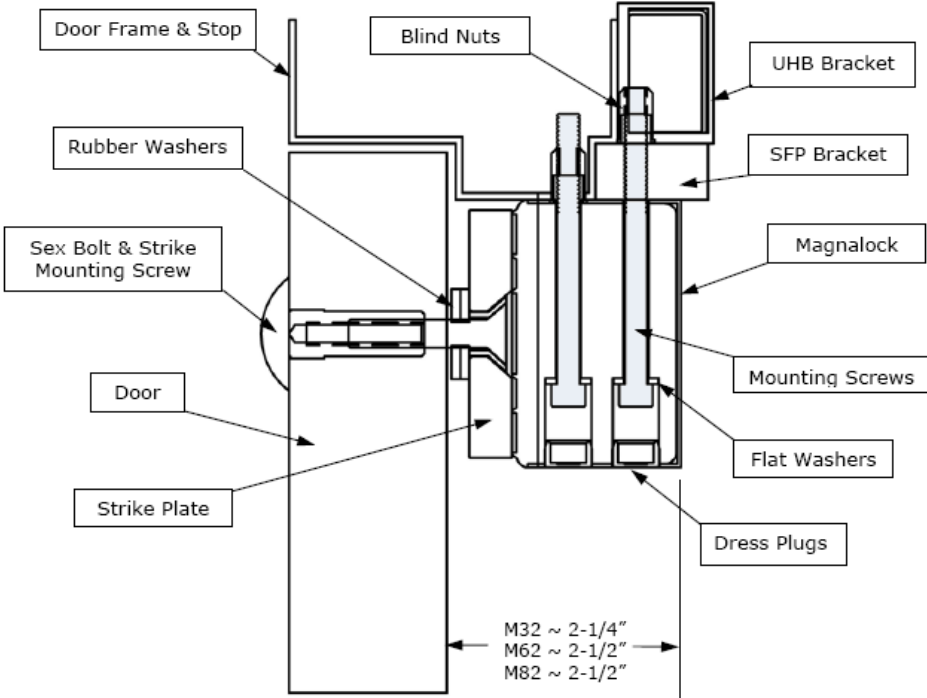
NOTES:

The larger the holding force the larger the dimensions of the lock.

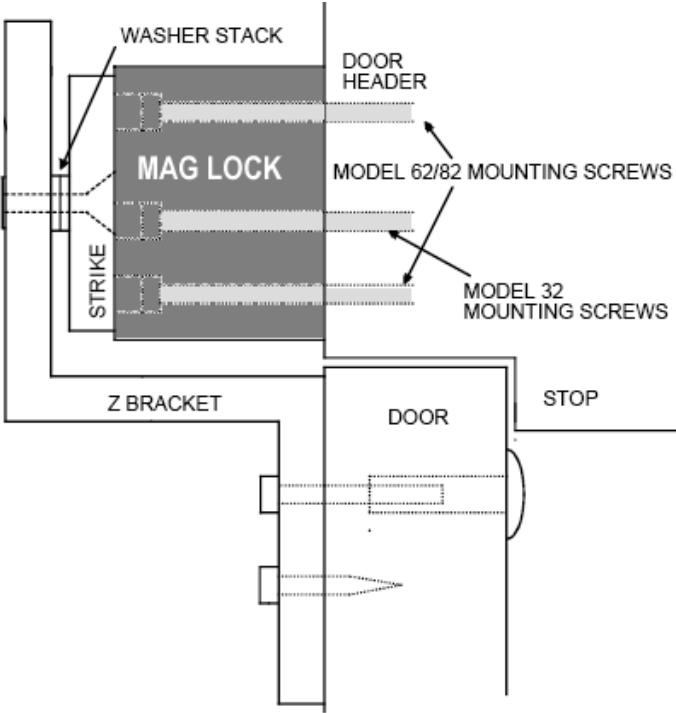
Higher security locks have more product options available.

Step 2: Mounting Style

The standard mounting style for a mag lock is to secure the lock to the frame header.



Mag Locks are sometimes FACE MOUNTED which have the bolts running horizontally through the lock.



Example of standard mag lock model: M32
 Example of face mounted mag lock model: M32F

Mag locks are rarely face mounted. But sometimes frame conditions require this special mounting type. The most common application would be an exterior door that swings into the building (inswing).

Inswing doors require special ordering:

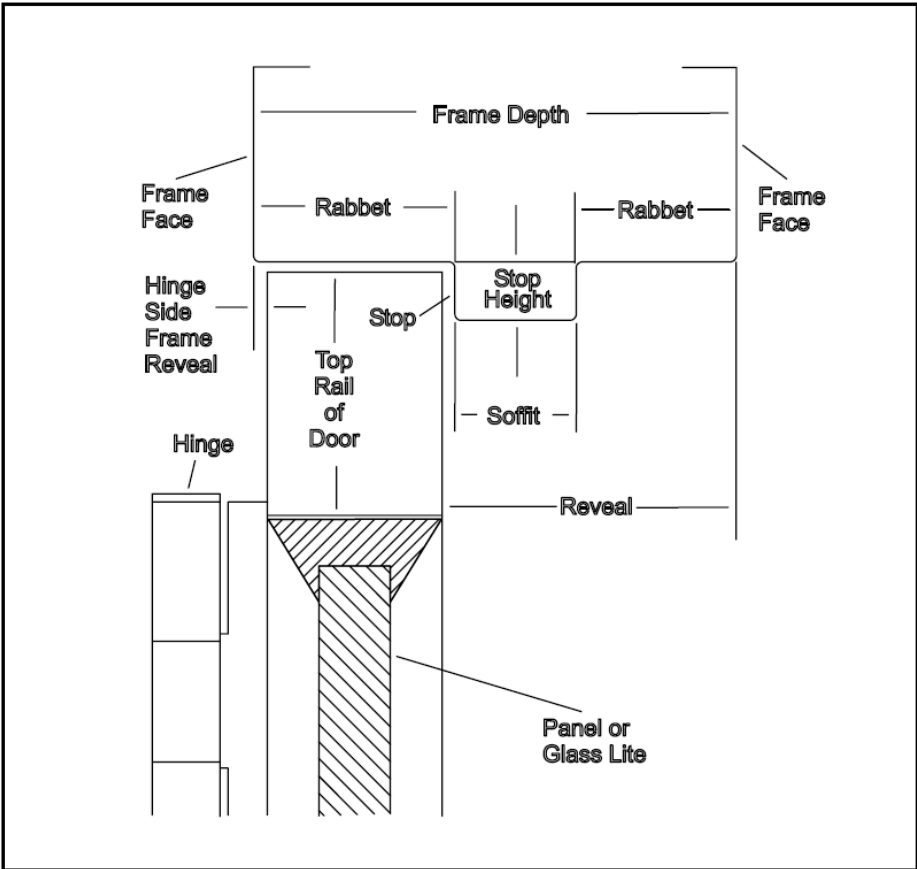
- "F" type mag lock (face mounted)
- "Z" bracket

Note that standard mag locks mount on outswing doors and mount on the push side of the door. Face mounted locks mount to inswing doors and mount on the pull side of the door.

Step 3: Mounting Brackets

It is rare to not need a mounting bracket of some sort for proper installation.

The reason is most walls are 4-5 inches thick, and the frame that wraps the wall is only slightly larger. The rabbet of a standard frame is therefore not wide enough to mount a mag lock.



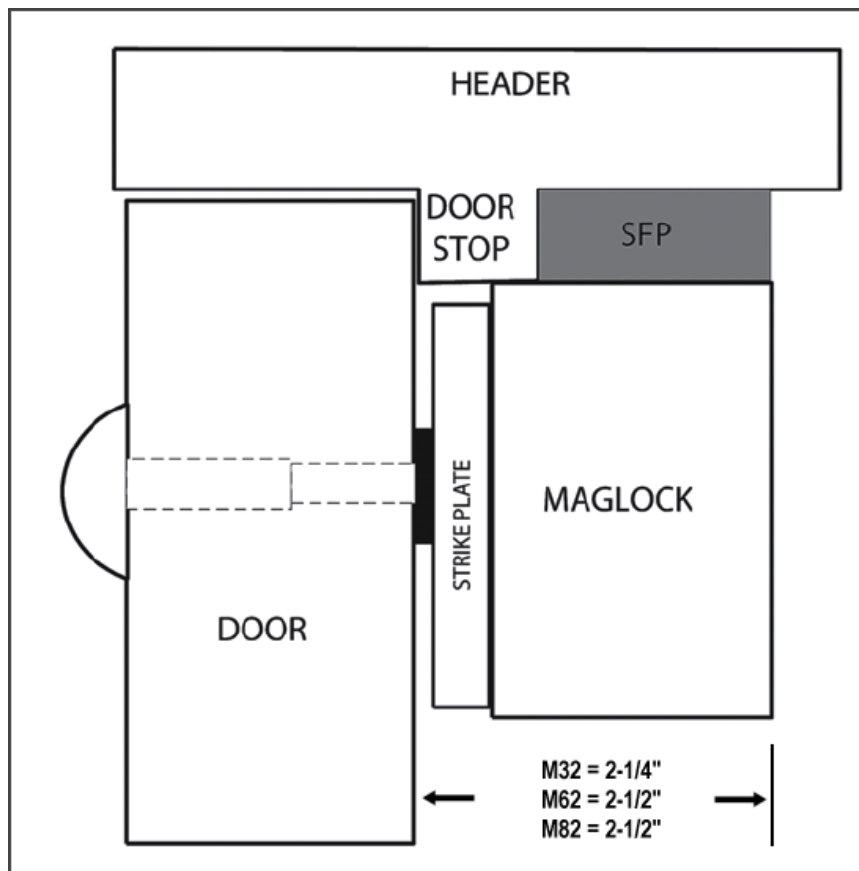
It is important to know the various frame parts when installing mag locks.

You will need to measure parts of the frame to order the correct mounting bracket. Most importantly, measure:

- Reveal
- Stop Height
- Rabbet

Although rare, you might not need a mounting bracket. This type of application would have an extra thick wall, with a corresponding deeper door frame. It also requires the door stop to be the exact width for the lock mounting, a rare combination.

Most frames, however, will be similar to the image below.



The Soffit, or width of the door stop is a key measurement.

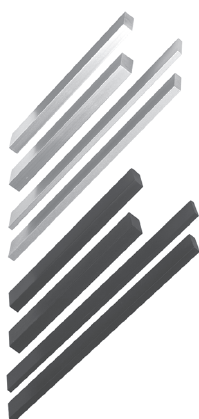
The image shows how the strike plate takes up a portion of this space and the corner of the mag lock takes up the balance. This leaves the majority of the mag lock unsupported.

A SFP Stop Filler Plate is the most common type of add-on bracket for mounting.

Ordering the correct SFP requires you to measure the stop height. The most common heights are 3/8\" and 1/2\".

Other Plates are available in 1/4\", 5/8\" and 3/4\" heights.

Ordering SFP Stop Filler Plates is easy once you've made your measurements. They are available in two lengths and two finishes. CL Clear means aluminum finish and BK is Black finish. Order 8\" plates for M32 and M62 locks, and order 12\" plates for M82 locks.



- | | |
|--------------|-----------------------|
| SFP-1/4CL-8 | SFP 1/4\" Clear - 8" |
| SFP-1/4BK-8 | SFP 1/4\" Black - 8" |
| SFP-3/8CL-8 | SFP 3/8\" Clear - 8" |
| SFP-3/8BK-8 | SFP 3/8\" Black - 8" |
| SFP-1/2CL-8 | SFP 1/2\" Clear - 8" |
| SFP-1/2BK-8 | SFP 1/2\" Black - 8" |
| SFP-5/8CL-8 | SFP 5/8\" Clear - 8" |
| SFP-5/8BK-8 | SFP 5/8\" Black - 8" |
| SFP-1/4CL-12 | SFP 1/4\" Clear - 12" |
| SFP-1/4BK-12 | SFP 1/4\" Black - 12" |
| SFP-3/8CL-12 | SFP 3/8\" Clear - 12" |
| SFP-3/8BK-12 | SFP 3/8\" Black - 12" |
| SFP-1/2CL-12 | SFP 1/2\" Clear - 12" |
| SFP-1/2BK-12 | SFP 1/2\" Black - 12" |
| SFP-5/8CL-12 | SFP 5/8\" Clear - 12" |
| SFP-5/8BK-12 | SFP 5/8\" Black - 12" |

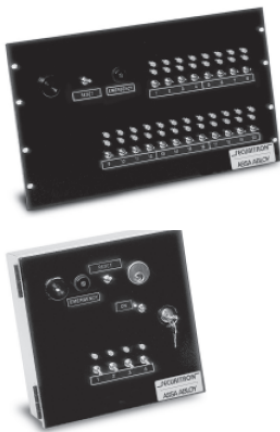
Special types of frames require different mounting brackets. The image below shows all the mounting options:



Should you have another type of frame than shown on the previous page, you will need a special bracket. Refer to Securitron's web site for the PDF files they make available. The installation files show the best descriptions.

Step 4: Switch Options

A standard door needs no special switch options. These switches are only used in higher security applications that have a remote monitoring device for the door. An example would be a remote monitoring station in an airport that contains monitors for every door in the building. These monitors constantly check the status of each door and signal an alarm should unauthorized entry occur.



These add-on switches are internal to the lock or are added at the door near the lock.

B Option	Magnetic Bond Sensor
D Option	Door Position Switch
T Option	Anti-Tamper Switch
S Option	Senstat - Same as "B" option

Magnetic Bond Sensor

Senses when the door is secure by detecting a positive bond between the lock and the strike plate. Some models have the "B" option for this switch while others use the "S" Senstat option.

Door Position Switch

This switch only indicates if the door is open or closed. Best used in combination with the magnetic bond sensor as monitors also want to know if the door is locked and secure.

Anti-Tamper Switch

Switch installs inside the lock and detects if anyone has tried to pry the lock open. Factory installed option.

LED

Some models have an optional LED light available. The LED extends through the back of the M38 or M68 Magnalock to give visual status of the lock. On locks with the Senstat option the LED will be green when the lock is powered but not secure and red when the lock is secure. Locks without the Senstat option will only indicate green when powered.