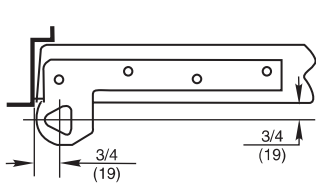
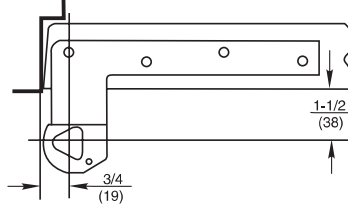


1. OFFSET VS. CENTER HUNG APPLICATION



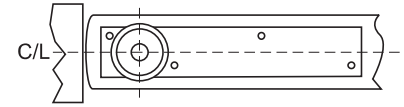
3/4" Offset

Pivot point located 3/4" from the heel edge of the door and 3/4" from face of door.



1-1/2" Offset

Pivot point located 3/4" from the heel edge of the door and 1-1/2" from face of door.



Center Hung

Pivot point centered in thickness of door.

2. SIZE OF DOOR (WIDTH, HEIGHT, THICKNESS)

DOOR MATERIAL	DOOR THICKNESS				
	1-3/8"	1-3/4"	2"	2-1/4"	2-1/2"
Aluminum	Weight-per-square-foot (in pounds): 3-1/2				
Ash	4-1/2	5-1/4	6	6-3/4	7-1/2
Birch	3-3/4	4-1/2	5	5-3/4	6-1/4
Hollow Metal	6-1/2	6-1/2		6-1/2	
Oak	6	7	8	9	10
Pine	3	3-1/2	4	4-1/4	5
LEAD LINING	LEAD THICKNESS				
	1/64"	1/16"	1/8"	1/4"	
	Weight-per-square-foot (in pounds):				
	1	3-3/4	7-1/2	13-3/4	
TEMPERED GLASS	GLASS THICKNESS				
		3/8"	1/2"	3/4"	
	Weight-per-square-foot (in pounds):				
		5	8	9-3/4	
MARBLE/GRANITE CLADDING	THICKNESS				
					* 3/4"
	Weight-per-square-foot (in pounds):				
	10-1/2				

Example: A two-inch-thick birch door has a square foot weight of five pounds. If the door has standard dimensions of 3'(width) x 7'(height), this equals 21 square feet. So, 5 pounds x 21 square feet = 105 pounds total weight.

*Consult factory for sizes greater than 3/4"

3. EXPECTED FREQUENCY OF DOOR OPERATION

APPLICATION	DAILY	YEARLY	
Large department store entrance	5,000	1,500,000	
Large office building entrance	4,000	1,200,000	
Theater entrance	1,000	450,000	
School entrance	1,250	225,000	HIGH
School restroom door	1,250	225,000	
Store or bank entrance	500	150,000	
Office building restroom door	400	118,000	
School corridor door	80	15,000	
Office building corridor door	75	22,000	AVERAGE
Store restroom door	60	18,000	
Residential entrance door	40	15,000	
Residential restroom door	25	9,000	
Residential hallway door	10	3,600	LOW
Residential closet door	6	2,200	

Rixson® pivots and pivot sets are recommended for high-traffic interior or exterior doors, or any door where appearance is an important consideration. They are especially useful for extra-heavy or lead-lined doors.

AESTHETICS

- Offset or center hung pivot sets are more attractive than alternative door hanging devices.
- Full floor-to-ceiling concealment is offered for center hung doors providing almost unlimited design flexibility.
- Extended spindles available to raise door above finished floor for complete concealment.
- Specification of heavy panels for door face with standard offset pivot preparation is available.
- Doors up to 1,750 pounds are accommodated, allowing all standard and heavy doors in a building to be hung by same hanging means.

EXCLUSIVE RIXSON FEATURES

- Many special layouts are available for unique applications.
- Shim packages to accommodate building settling
- Heavyweight pivots have extra thrust bearing to eliminate door and frame wear.

PERFORMANCE

- Full weight of door is borne by floor pivot, providing long pivot life and trouble-free operation.
- Screws are in shear in pivot-set installations and are less likely to pull out from tension—eliminates sagging doors.
- Vertical adjustment provides for field modifications to suit conditions.

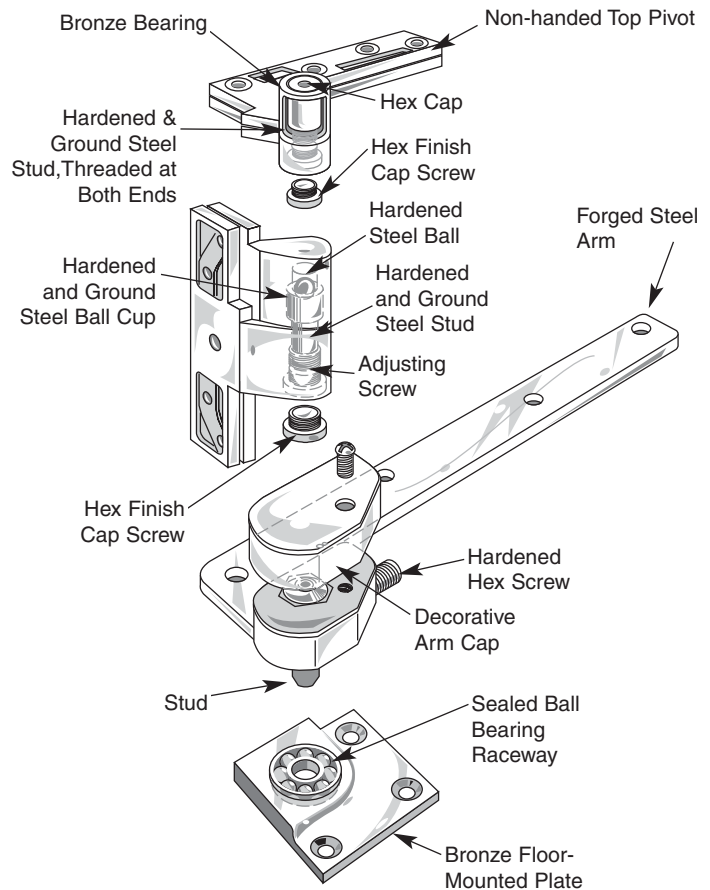
SAFETY & SECURITY

- Models are available for labeled fire and lead-lined doors.
- Doors cannot be removed by vandals.
- Virtually concealed, pivots are not abuse or vandal prone.
- All offset pivots shall be UL10C compliant.

ECONOMY

- Pivots provide longer life and more trouble-free operation than other door hanging means.
- Door and frame life is lengthened.

147 Pivot Set with M19 Intermediate Pivot



SUGGESTED SPECIFICATION

All pivots and/or pivot sets shall be the product of one manufacturer. Sets as noted in hardware groups shall be matching in design for both labeled fire doors, lead-lined doors and regular doors. Pivots for 20-minute fire doors shall be non-ferrous and match the finish of adjacent hardware. All pivot sets are required to meet ANSI grade one standard as listed in ANSI 156.4. Caps shall be hex type to increase security.