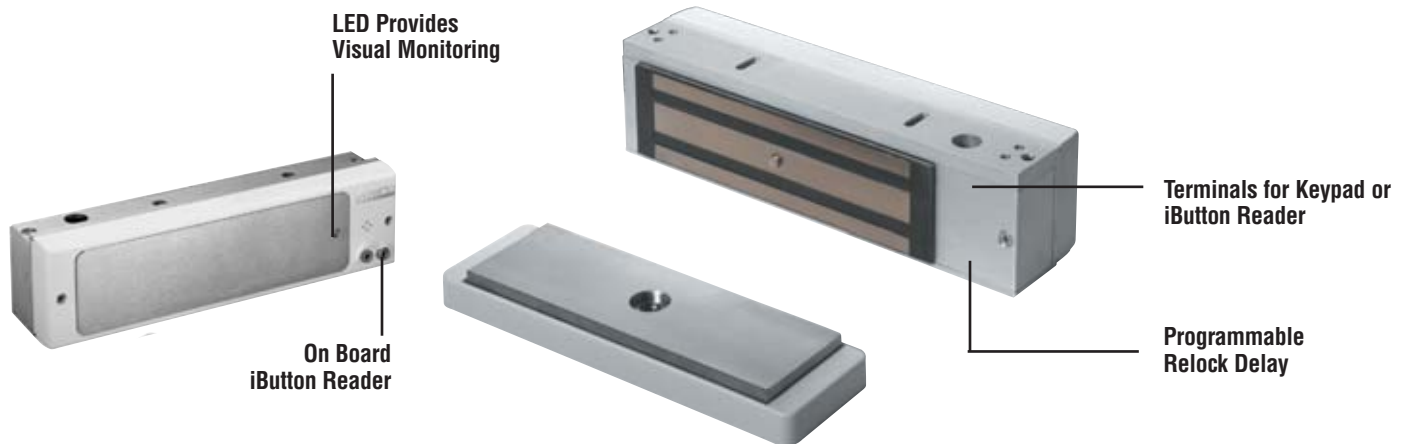


# MagForce™ 390DEL Delayed Egress Locking System

## The Intelligent Force Solution

**MagForce™**  
LIFETIME WARRANTY



The 390DEL Series Delayed Egress Locking System is a self contained unit, designed to meet NFPA 101 Life Safety Code and BOCA, while providing ongoing access controlled security. This easy to install, cost effective solution provides the highest access security and safety.

The 390DEL delayed egress is triggered by an internal “plunger switch,” to initiate a 15 or 30 second delay and audible alarm before unlocking and can be triggered by external contacts such as an electrified exit bar or a Request to Exit device. The 390DEL

utilizes an on board iButton Reader to provide reset and legal release. Two iButton fobs are shipped with each lock. Up to seven iButton keys may be programmed without a programmer. Up to 150 users may be programmed with a keypad. Each lock includes an on board microprocessor that accepts all Locknetics iButton readers, keypads, or any other access control system which can provide a dry-contact closure.

### Benefits of Using MagForce™ 390DEL

- Automatic Voltage Selection
- Low Voltage Alert
- Fire Alarm Terminals
- Legal Release Input
- Reset Input
- Internal Plunger Switch
- Auxiliary Input (For Delayed Egress Activation)
- Alarm Contacts
- On board iButton Reader
- Anti-tamper Switch
- On board Control Circuitry for iButton readers or keypads
- On board Tri-Color LED
- On board Audible Alarm
- Programmable Relock Delay
- Programmable Nuisance Delay
- Selectable Nuisance Delay Alert
- Selectable Delayed Egress Time
- Selectable Unlock Alarm



# MagForce™ 390DEL Delayed Egress Locking System

The Intelligent Force Solution

## How To Order MagForce™ 390DEL

**390DEL – HDB90 – 612 – KP74+ + EXCIP**

Select Model				
Select Options				
Select Finish				
Select Accessories				
Select Computer Programming Accessories				

### 1. Select Model

- 390DEL** Single Lock
- 390DEL-2** Double Unit – Separate Housing
- 390DEL-DSM/MBS/SEC**
- 390DEL-2/DSM2/MBS2/SEC2**
- 390DEL-DSM/MBS/SEC/ATS/BOCA**
- 390DEL-2/DSM2/MBS2/SEC2/ATS/BOCA**

### 2. Select Options

- HDB90 HDB92** Herculite Door Bracket

### 3. Select Finish

- 628** US28 Satin Aluminum, Anodized (*standard*)
- 628B** US28 Satin Aluminum w/ Black
- 335** US19 Satin Black, Anodized
- 612B** US10 Satin Bronze
- 612SF** US10 Satin Bronze-SF
- 672B** US26 Bright Chrome
- 672SF** US26 Bright Chrome-SF
- 666B** US3 Bright Brass
- 666SF** US3 Bright Brass-SF
- 613SF** US10B Dark Satin Bronze

Armature housing finish standard Lexan black  
**B suffix** – Satin black anodized 335/US19 housing with choice of select special finish for slide plates only  
**SF suffix** – Special finish for all metal surfaces

### 4. Select Accessories

#### Keypads and Accessories

- KP74+\*** Narrow, stainless steel, high traffic
- KP76+\*** Narrow, black Lexan housing, all-purpose
- KP78+\*** Narrow, black Lexan housing, all-purpose, Available in special finishes
- KP79+\*** Single gang box mount, black Lexan, all-purpose, Available in special finishes

### 4. Select Accessories (continued)

#### iButton Readers and Accessories

- TR80** Cast stainless steel includes 80CAB interface cable
- TR81** Cast stainless steel includes 80CAB interface cable
- TR83\*** All-purpose – black Lexan housing, Available in special finishes
- TR84\*** All-purpose – black Lexan housing, Available in special finishes
- IBA** iButton with adhesive back
- IBF** iButton with keyfob

\*100 CAB interface cable required for use with keypads, TR83 and TR84

### 5. Select Computer Programming Accessories

- EXCIP** Computer Interface Pack  
Includes Windows based LockLink, Express software, PC Cable and interface module
- IRPDA** Computer Programming Kit with serial and USB cable. Cradle includes PDA installed with UpLink software, cable and interface module
- 100CAB** Interface Cable for keypads, TR83 and TR84
- AUXCAB1** 1 ft. Auxiliary Cable for use with 100CAB
- AUXCAB16** 16 ft. Auxiliary Cable for use with 100CAB

### Specifications:

#### 390DEL

- Holding Force:** 1500 lbs.
- Input Voltage:** 12/24 VAC/VDC
- Current Draw:** .8@12VDC  
.5@24VDC

- Height:** 2<sup>3</sup>/<sub>4</sub>"
- Length:** 10<sup>1</sup>/<sub>2</sub>"
- Width:** 2<sup>1</sup>/<sub>2</sub>"
- Weight:** 12.5 lbs

#### 390DEL-2

- Holding Force:** 1500 lbs. per door leaf
- Input Voltage:** 12/24 VAC/VDC
- Current Draw:** .8@12VDC  
.5@24VDC
- Height:** 2<sup>3</sup>/<sub>4</sub>"
- Length:** 21"
- Width:** 2<sup>1</sup>/<sub>2</sub>"
- Weight:** 25 lbs