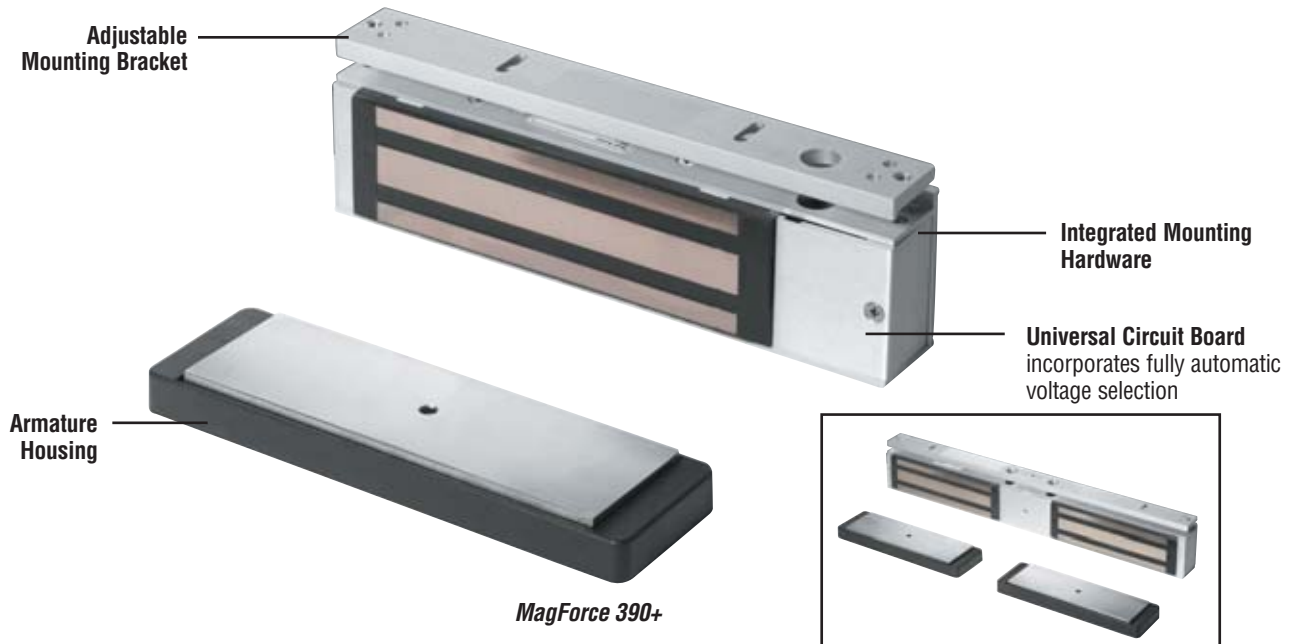


MagForce™ 390+ Series Electromagnetic Lock

The High Security Solution

MagForce™
LIFETIME WARRANTY



Now with Fully Automatic Voltage Selection

The 390+ surface mounted electromagnetic lock is ideal for high security applications. This lock exceeds ANSI/BHMA A156.23 Grade 1 standards with 1650 pounds of direct holding force and is UL listed as an auxiliary lock for a 3 hour fire rated opening and for burglary resistance.

The 390+ is available for single, inswinging or outswinging, hollow metal, aluminum, and wood doors and frames as well as glass doors. The 392+ is available for pairs of hollow metal, aluminum, and wood doors and frames as well as glass doors

without a mullion. The 391+ with split armature is used with pairs of hollow metal, aluminum, and wood doors and frames without a mullion.

All models are ideal for open architecture and easily interface with electronic access control systems, automatic door operators, and fire or other hazard sensing systems for egress and emergency egress.

Benefits of Using MagForce™ 390+

- Fully Automatic Voltage Selection simplifies installation
- Modular design employs a standardized circuit board with easy to install connectors, adjustable mounting brackets, integrated mounting screws, and slide-in architectural finish plates
- The uniquely designed armature housing holds the armature in place, eliminating the noise and sagging possible with other armatures
- The armature housing increases the overall reliability of the product and provides an aesthetically pleasing look over traditional armature mountings, blending into the surrounding environment more easily
- The armature housing holds the magnets for the DSM option without having to mount an additional plate to the armature, ensuring quicker, more reliable installation

1650 lbs.
Holding Force



CSFM
MEA 14-95-6

MagForce™ 390+ Series Electromagnetic Lock

The High Security Solution

How To Order MagForce 390+

390+ – ATS – 666 – CLH90

Select Model	
Select Options	
Select Finish	
Select Accessories	

1. Select Model

390+	High Security – Single Lock
391+	High Security with Split Armature
392+	High Security – Double Unit
390+ DSM/MBS	Single Lock with Door Status Monitor/ Magnetic Bond Sensor
392+ DSM/MBS	Double Lock with Door Status Monitor/ Magnetic Bond Sensor

2. Select Options/Accessories

RTD/RTD2	Relocking Time Delay	
ATS/ATS2	Anti-tamper Switch	
HDB*	Herculite Door Bracket	
	Single	HDB890
	Double	HDB892
L1/L2**	LED indicator	
RCP/RCP2	Voltage Rectifier	
TJ**	Top Jamb for inswing door	
	Single	TJ90
	Double	TJ92
	Split	TJ91
CLH	Custom Length Housing (Factory cut)	
	Horizontal Single	CLH90-3
	Horizontal Double	CLH92-4
	Vertical Single	CLH90-5
	Vertical Double	CLH92-6
VLH	Variable Length Housing (Field Cut)	
	Horizontal Single	VLH90-3
	Horizontal Double	VLH92-4
	Vertical Single	VLH90-5
	Vertical Double	VLH92-6

* HDB/DSM/MBS option not available for 391+ model
 ** L1/L2 option only available on DSM/MBS models, not available for TJ applications

3. Select Finish

628	US28	Satin Aluminum, Anodized (<i>standard</i>)
335	US19	Satin Black, Anodized
612B	US10	Satin Bronze
612SF	US10	Satin Bronze-SF
613SF	US10B	Dark Satin Bronze, Anodized
628B	US28	Satin Aluminum, w/ Black
666B	US3	Bright Brass
666SF	US3	Bright Brass-SF
672B	US26	Bright Chrome
672SF	US26	Bright Chrome-SF

Armature housing finish standard Lexan black
B suffix – Satin black anodized 335/US19 housing with choice of select special finish for slide plates only
SF suffix – Special finish for all metal surfaces

Specifications:

390+	Holding Force: 1650 lbs.
	Input Voltage: 12/24 VDC
	Current Draw: .60A@12VDC .30A@24VDC
	Height: 2 ³ / ₄ "
	Length: 10 ¹ / ₂ "
	Width: 1 ¹¹ / ₁₆ "
	Weight: 10.60 lbs
391+	Holding Force: 750 lbs. per door leaf
	Input Voltage: 12/24 VDC
	Current Draw: .60A@12VDC .30A@24VDC
	Height: 2 ³ / ₄ "
	Length: 10 ¹ / ₂ "
	Width: 1 ¹¹ / ₁₆ "
	Weight: 10.60 lbs
392+	Holding Force: 1650 lbs. per door leaf
	Input Voltage: 12/24 VDC
	Current Draw: 1.2A@12VDC .60A@24VDC
	Height: 2 ³ / ₄ "
	Length: 20 ⁵ / ₈ "
	Width: 1 ¹¹ / ₁₆ "
	Weight: 20.70 lbs